



SELVE always
has the right
drive.



Electronic motors
for roller shutters and awnings:
everything the professional needs

SELVE
Engineering in motion



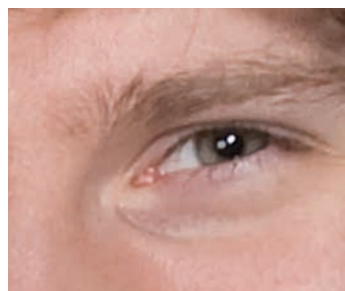
SELVE-SE-motors. Provide security in every life situation



Protection against burglars
– fully automatic



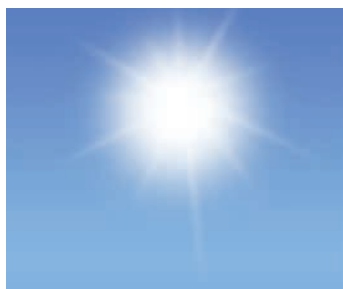
Protection against energy loss
– fully automatic



Protection against prying eyes
– fully automatic



Protection against damage
– fully automatic



Protection against glare
– fully automatic



Protection against overload
– fully automatic

Stay secure ...

Closed roller shutters provide security – from prying eyes as well as uninvited guests. During the day, they provide protection from too much sunlight and heat; at night or when the owners are away, they prevent people looking in, preserve your privacy, keep burglars out and, in cold weather, keep costly heating energy in.

If only I didn't have to waste so much time and effort lifting the shutters up and pulling them down!

It does not need to be so much effort. Not with SELVE's electronic roller shutter motors.

It is easy to raise or lower heavy shutter curtains with this powerful SELVE roller shutter motors. One press of a button is enough and then the SELVE roller shutter motors do the work. Is that still too much for you? Then you can have your shutter opened and closed fully automatically at set times or depending on the amount of daylight, individually, in groups or in the whole house. All you have to do is integrate the SELVE motors into a convenient SELVE control system, e. g. intronic.

The SELVE- electronic motors form the basis of this modern convenience. These robust motors are available in all popular sizes and they make light work of the heaviest shutters. And even with unpredicted incidents: if the roller shutter freezes onto the ground or an obstacle blocks its way, the intelligent motor automatically switches off, thus protecting your system against damage. SELVE also provides a convincing solution for the easy operation of awnings with its awning motors.

SELVE electronic motors for roller shutters and awnings can save you a lot of time and effort. Your specialist dealer will be pleased to advise you.

SELVE-SE-motors for roller shutters

SE Plus · SES · SEL Plus



SE-motors (SELVE Electronics)

Precision, flexibility, ease of assembly – these and other qualities are what make electric SELVE motors for roller shutters and awnings something special. Particularly the versatility of the SELVE range of roller shutter motors with electronic automatic cutoff is highly appraised by professionals:

The basis model has a high degree of comfort: all motors can be easily installed and adjusted as well as switched in parallel without

any additional components. If the motors have to be adapted to conventional shafts, that is no problem – thanks to the innovative adapter system. The series of models

- **SES (SELVE-Electronic-Safety)**
- **SEL (SELVE-Electronic-Luxury)**

then provide various degrees of extra comfort: from quiet running to programming of overload protection.

The advantages of the SE-motors at a glance

	SE	SES	SEL
Automatic End stop in downward direction		+	+
Quiet running under the roller shutter box (stop required)	+	+	+
No adjustment of the end positions is necessary after lengthening the roller shutter	+	+	+
No upper end stop is required thanks to position-controlled switching	+	+	+
Easy to adapt to all conventional roller shutter shafts thanks to a new type of adapter system	+	+	+
Parallel switching of several SELVE electronic motors possible without additional switching elements	+	+	+
Overload protection against overload in the upward direction in the event of high torques	+	+	+
Installation in the usual way	+	+	+
Easy to set using the 4-wire connecting cable, without having to open the roller shutter box	+	+	+

SELVE-SEL-Plus-drives: Automatic adjustment!

SEL Plus

A novelty in the field of roller shutter drives:

The roller shutter installation is protected in an optimal way using a SEL-Plus-drive. During first installation you can set, if the roller shutter will run smooth against the upper limit or will be shut-off at the fixed upper point. The end limits are programmed by pushing a button – first installation even without any installation cable.



+ up- and downwards direction is detected automatically

+ soft approach to the shutter box with automatic release function

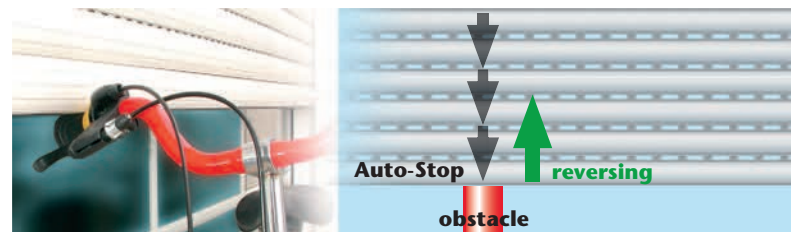
+ obstacle detection in downwards direction and reverse function

+ end limits are programmed automatically by a push button

Further advantages of the SEL-Plus-drives:

- overload cut-out if torque is exceeded when raising the shutter (e.g. frozen on roller shutter)
- it is not necessary to adjust the roller shutter after stretching (automatic adjustment))
- several SELVE electronic drives can be connected in parallel without additional switching units

The reversing function protects the installation



radioversion also available



SELVE-SE-R radio-operated motors

SE-R · SES-R · SEL-R



SE-R-motors (SELVE Electronics Radio)

The excellent properties of all SE motors are still to be found in the radio version of these motors. They are perfectly adapted to the SELVE intronic system and have distinct advantages:

- the motors are easy to install
- radio transmission at a frequency of 868 MHz that is free from interference
- the end limits can be easily set – by radio control system or using the 5-wire connecting cable; the roller shutter box does not need to be opened
- group and central functions can be easily carried out and changed
- patented group separation for easy changes
- the direction of rotation is automatically assigned
- if torques are too high in the upwards direction, an overload protection is engaged
- the roller shutters can also be operated individually using conventional switches
- the motors possess an additional intermediate position

intronic – a complete system

With intronic, SELVE presents a complete radio system you can use to open and close motor-driven roller shutters and awnings easily by remote control or wall-mounted transmitter: individually or in up to five groups determined by you; in one room or distributed throughout the whole building. The shutters can be spontaneously moved or automatically, dependent on the time, daylight or weather.

Operation is by hand-held and wall-mounted radio transmitters not requiring a control cable. The intronic remote control is so practical it allows you to operate your shutters and awnings as-easily as a television. Right through the house. In addition, motors already installed can later be equipped with radio receivers and integrated into an intronic radio system.



Stationary transmitters



i-R Timer Plus

Radio-controlled timer with astro, sunlight and twilight function

Item No. 29 87 00



i-R Wall Send

Radio-controlled wall-mounted transmitter, 1-channel

Item No. 29 87 10



i-R Light Sensor

Radio-controlled light sensor

Item No. 29 87 03

Transportable transmitters



i-R Multi Send

Radio-controlled handheld transmitter, 5-channel with timer

Item No. 29 87 22



i-R Send 1

Radio-controlled handheld transmitter, 1-channel

Item No. 29 87 11



i-R Send 5

Radio-controlled handheld transmitter, 5-channel

Item No. 29 87 12

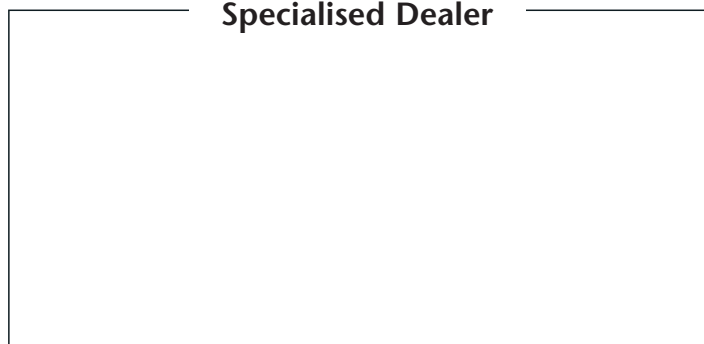
Type	Item No.	Speed [rev./min.]	1,5 m / 2,5 m*
SE 1/6	38 01 23	15	14 kg / 11 kg
SE 1/10	38 01 43	15	25 kg / 20 kg
SE 2/7	38 20 23	17	19 kg / 15 kg
SE 2/10	38 20 43	17	25 kg / 20 kg
SE 2/15	38 20 53	17	35 kg / 29 kg
SE 2/20	38 20 63	17	45 kg / 37 kg
SE 2/30	38 20 73	17	67 kg / 56 kg
SE 2/40	38 20 83	17	88 kg / 72 kg
SE 2/50	38 21 93	12	102 kg / 83 kg
SE 3/50	38 60 13	17	99 kg / 81 kg
SE 3/60	38 61 23	12	116 kg / 100 kg
SE 3/70	38 60 33	17	135 kg / 116 kg
SE 3/80	38 61 43	12	154 kg / 130 kg
SE 3/120	38 61 53	11	232 kg / 200 kg
SES 2/7	38 22 23	17	19 kg / 15 kg
SES 2/10	38 22 43	17	25 kg / 20 kg
SES 2/15	38 22 53	17	35 kg / 29 kg
SES 2/20	38 22 63	17	45 kg / 37 kg
SEL 1/6	38 05 23	15	14 kg / 11 kg
SEL 1/10	38 05 43	15	25 kg / 20 kg
SEL 2/7	38 24 23	17	19 kg / 15 kg
SEL 2/10	38 24 43	17	25 kg / 20 kg
SEL 2/15	38 24 53	17	35 kg / 29 kg
SEL 2/20	38 24 63	17	45 kg / 37 kg
SEL 2/30	38 24 73	17	67 kg / 56 kg
SEL 2/40	38 24 83	17	88 kg / 72 kg
SEL 2/50	38 25 93	12	102 kg / 83 kg
SEM 1/7	38 09 33	20	7 Nm (awning)
SEM 2/7	38 28 23	17	7 Nm (awning)
SEM 2/10	38 28 43	17	10 Nm (awning)
SEM 2/15	38 28 53	17	15 Nm (awning)
SEM 2/20	38 28 63	17	20 Nm (awning)
SEM 2/30	38 28 73	17	30 Nm (awning)
SEM 2/40	38 28 83	17	40 Nm (awning)
SEM 2/50	38 29 93	12	50 Nm (awning)
SEM 3/50	38 68 13	17	50 Nm (awning)
SEM 3/70	38 68 33	17	70 Nm (awning)
SE 1/4-R	38 11 13	30	10 kg / 8 kg
SE 1/6-R	38 11 23	15	14 kg / 11 kg

Type	Item No.	Speed [rev./min.]	1,5 m / 2,5 m Effective roller shutter weight for roller shutters with height of 1.5 m and 2.5 m
SE 1/7-R	38 11 33	20	17 kg / 14 kg
SE 1/10-R	38 11 43	15	25 kg / 20 kg
SE 1/13-R	38 11 53	8	32 kg / 26 kg
SE 2/7-R	38 30 23	17	19 kg / 15 kg
SE 2/10-R	38 30 43	17	25 kg / 20 kg
SE 2/15-R	38 30 53	17	35 kg / 29 kg
SE 2/20-R	38 30 63	17	45 kg / 37 kg
SE 2/30-R	38 30 73	17	67 kg / 56 kg
SE 2/40-R	38 30 83	17	88 kg / 72 kg
SE 2/50-R	38 31 93	12	102 kg / 83 kg
SE 3/50-R	38 70 13	17	99 kg / 81 kg
SE 3/60-R	38 71 23	12	116 kg / 100 kg
SE 3/70-R	38 70 33	17	135 kg / 116 kg
SE 3/80-R	38 71 43	12	154 kg / 130 kg
SE 3/120-R	38 71 53	11	232 kg / 200 kg
SES 2/7-R	38 32 23	17	19 kg / 15 kg
SES 2/10-R	38 32 43	17	25 kg / 20 kg
SES 2/15-R	38 32 53	17	35 kg / 29 kg
SES 2/20-R	38 32 63	17	45 kg / 37 kg
SEL 1/6-R	38 15 23	15	14 kg / 11 kg
SEL 1/10-R	38 15 43	15	25 kg / 20 kg
SEL 2/7-R	38 34 23	17	19 kg / 15 kg
SEL 2/10-R	38 34 43	17	25 kg / 20 kg
SEL 2/15-R	38 34 53	17	35 kg / 29 kg
SEL 2/20-R	38 34 63	17	45 kg / 37 kg
SEL 2/30-R	38 34 73	17	67 kg / 56 kg
SEL 2/40-R	38 34 83	17	88 kg / 72 kg
SEL 2/50-R	38 35 93	12	102 kg / 83 kg
SEM 1/7-R	38 19 33	20	7 Nm (awning)
SEM 2/7-R	38 38 23	17	7 Nm (awning)
SEM 2/10-R	38 38 43	17	10 Nm (awning)
SEM 2/15-R	38 38 53	17	15 Nm (awning)
SEM 2/20-R	38 38 63	17	20 Nm (awning)
SEM 2/30-R	38 38 73	17	30 Nm (awning)
SEM 2/40-R	38 38 83	17	40 Nm (awning)
SEM 2/50-R	38 39 93	12	50 Nm (awning)
SEM 3/50-R	38 79 13	17	50 Nm (awning)
SEM 3/70-R	38 79 33	17	70 Nm (awning)

The designation of the SELVE motors indicates the type of system shut-off, the series and the torque [Nm].

Sample: **SEL 2/15-R**
SEL = SELVE-Electronic-Luxus shutters
2 = series 2
15 = Torque 15 Nm
R = Execution Radio

Specialised Dealer



SELVE
Engineering in motion

SELVE GmbH & Co. KG · Werdohler Landstraße 286 · 58513 Lüdenscheid · Germany
Tel.: +49 2351 925-0 · Fax: +49 2351 925-111 · www.selve.de · info@selve.de